

4Matic offers WOG Manual Hand Lever Operated Low Torque High Pressure Ball Valve. Locking arrangement & Actuator Mounting Pad.

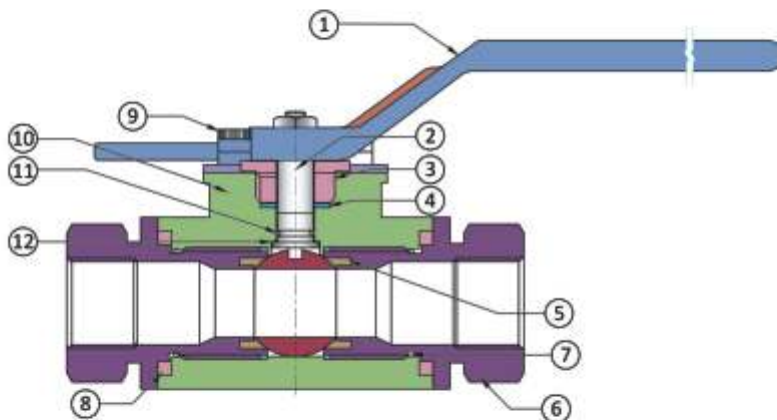
Size Range : 1/2" to 2" Screwed

Features :

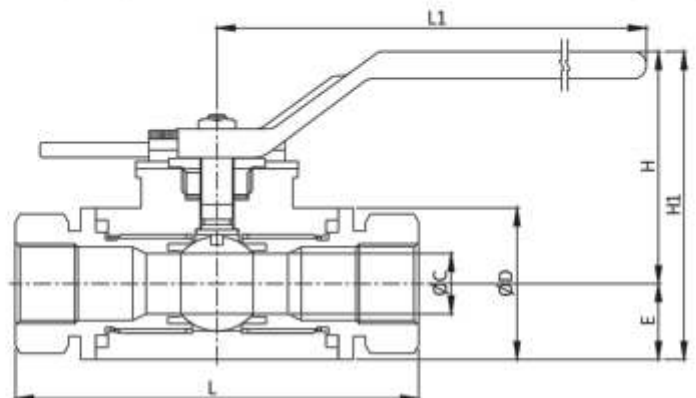
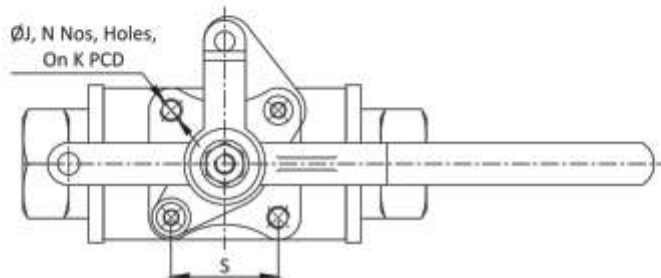
- Low Torque
- High Pressure with High Temperature Seals
- Locking Arrange for Security Purpose
- In built Mounting Pad for Pneumatic Actuator



Item	Type of Test	Testing Pressure	Working Pressure	Temperature
Valve Body Screwed End	Hydraulic	300 Kg	200 Kg	150 °C



No.	Description	Material	Qty.
1	Handle	WCB / CF8 / CF8M	01
2	Stem Pin	S. S. 304 / S. S. 316	01
3	Spacer Ring	S. S. 304 / S. S. 316	01
4	Stem Seat	S. S. 304 / S. S. 316	01
5	Ball Seat	Peek / Polyacetal	02
6	End Connector	WCB / CF8 / CF8M	02
7	'O' Ring	NBR / EPDM / Viton	02
8	Body Seat	Graphite	01
9	Fitting Stud	H.T. / CF8	01
10	Body	WCB / CF8 / CF8M	01
11	'O' Ring	NBR / EPDM / Viton	01
12	Gland Packing	Peek / Polyacetal	01



Dimensions :

(All Dimensions are in mm)

Valve Model	Size		L1	L	H	ØC	ØD	□S	ØJ	N	PCD	Weight (Approx.)
	MM	Inch										
4MWOG - 15	15	1/2"	160	98	75	12.7	39	25.4	M5X0.8	4	36	1.330
4MWOG - 20	20	3/4"	205	108	90	17.5	48	31	M6X1	4	42	1.440
4MWOG - 25	25	1"	205	108	96	22.3	55.5	31	M6X1	4	42	2.100
4MWOG - 32	32	1.1/4"	255	133	124	31.8	76.5	35.3	M6X1	4	51.5	4.850
4MWOG - 40	40	1.1/2"	255	133	124	31.8	76.5	35.3	M6X1	4	51.5	4.280
4MWOG - 50	50	2"	255	159	125	38.1	89.5	35.36	M6X1	4	51.5	7.420

4Matic 2 Way Ball Valves are design to suit a wide range of applications including mobile plant and industries equipment. Standard valves are intended for use on Hydraulic Mineral Oil. Stainless Steel Valves are available for use in corrosive environments and / or operation with corrosive fluids.



Size Range : 1/4" to 1"

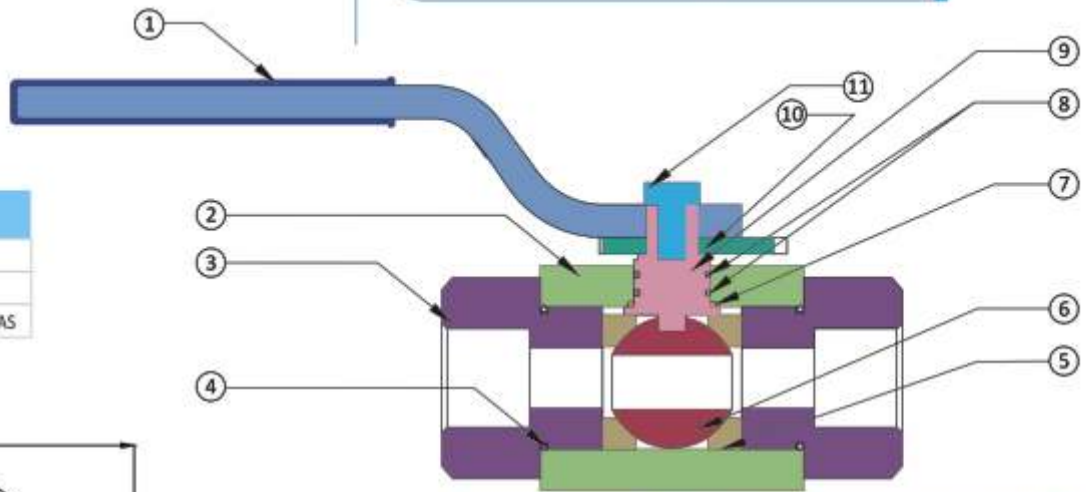
Features :

- Full bore valves provide an unrestricted flow path for negligible pressure drop.
- Floating ball on pre-compressed seals minimises wear and provides an excellent seal at positive and negative pressure.
- Operating temperature from -20 °C to 150 °C
- Open to close in 1/4 turn (90°)

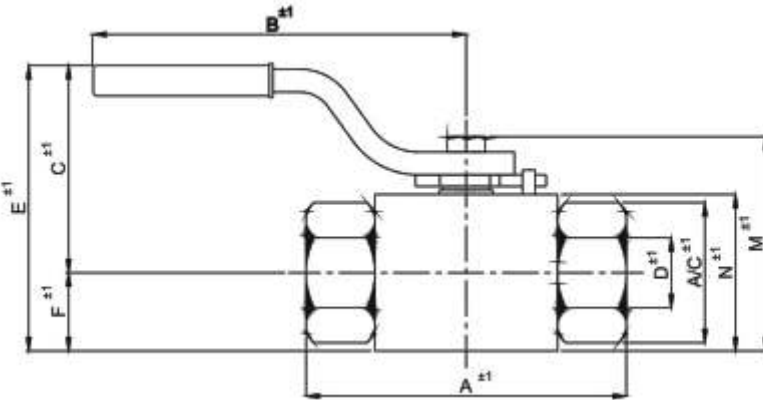
Stainless Steel Valves

Body and Ball in 316 Stainless Steel for use in the Food, Chemical and Pharmaceutical Industries. A variety of special seals can be provided to comply with the stringent specifications required by these applications.

TECHNICAL SPECIFICATION	
PRESSURE	AS PER TABLE**
TEMPERATURE	-20°C to 150 °C
MEDIA	AIR, WATER, OIL & GAS



No.	Description	Material	Qty.
1	Handle	Steel Powder Coated	01
2	Body	Forged Carbon / S.S. 304 / S.S. 316	01
3	End Connection	Forged Carbon / S.S. 304 / S.S. 316	02
4	'O' Ring	NBR / EPDM / Viton / Peek	02
5	Ball Sheet	Peek / Peek / Polyacetal	02
6	Ball	S.S. 304 / S.S. 316	01
7	Gland Packing	Peek / Peek / Polyacetal	01
8	'O' Ring	NBR / EPDM / Viton	02
9	Stem	S.S. 304 / S.S. 316	01
10	Stopper	Steel Powder Coated	01
11	Bolt	S. Steel	01



Dimensions :

(All Dimensions are in mm)

Valve Model	Valve Size		**Max. W.P. kg/cm ²	A	B	C	D Bore	E	F	A/C	N	M	Weight Approx
	MM	Inch											
A4-HP2W-BV-6	6	1/4"	700	65	125	55	6	70	15	31.8	39	56.5	0.540
A4-HP2W-BV-10	10	3/8"	500	84	145	60	10	70	20	36	46	65.5	1.070
A4-HP2W-BV-15	15	1/2"	500	84	145	65	15	80	20	36	46	63	1.030
A4-HP2W-BV-20	20	3/4"	500	95	195	85	20	110	25	51.5	61.5	87	2.040
A4-HP2W-BV-25	25	1"	325	107	195	85	25	110	25	57.5	67	91	2.580

4Matic 3 Way ball valves are designed to suit a wide range of applications including mobile plant and industrial equipment. Standard valves are intended for use on hydraulic mineral oil. Stainless steel valves are available for use in corrosive environments and/or operation with corrosive fluids.

Size Range : 1/2" to 1.1/2"

Features :

- Full bore valves provide an unrestricted flow path for negligible pressure drop.
- Floating ball on pre-compressed seals minimises wear and provides an excellent seal at positive and negative pressure.
- Operating temperature from -20 °C to 150 °C
- Open to close in 1/4 turn (90°)

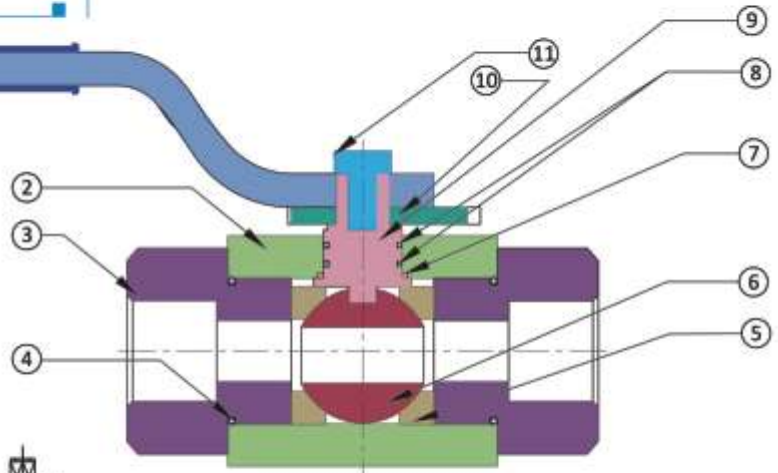
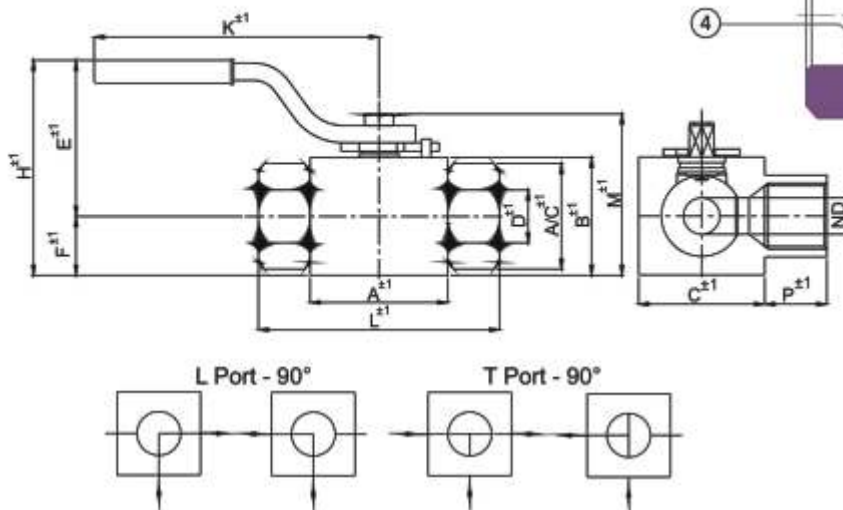
Stainless Steel Valves

Body and Ball in 316 Stainless Steel for use in the Food, Chemical and Pharmaceutical Industries. A variety of special seals can be provided to comply with the stringent specifications required by these applications.



TECHNICAL SPECIFICATION

PRESSURE	AS PER TABLE
TEMPERATURE	-20°C to 150 °C
MEDIA	AIR, WATER, OIL & GAS



No.	Description	Material	Qty.
1	Handle	Steel Powder Coated	01
2	Body	Forged Carbon / S.S. 304 / S.S. 316	01
3	End Connection	Forged Carbon / S.S. 304 / S.S. 316	02
4	'O' Ring	NBR / EPDM / Viton / Peek	02
5	Ball Sheet	Peek / Polyacetal	03
6	Ball	S.S. 304 / S.S. 316	01
7	Gland Packing	Peek / Peak / Polyacetal	01
8	'O' Ring	NBR / EPDM / Viton	02
9	Stem	S.S. 304 / S.S. 316	01
10	Stopper	Steel Powder Coated	01
11	Bolt	S. Steel	01

Dimensions :

(All Dimensions are in mm)

Valve Model	Valve Size		ND	A	B	C	A/C	H	K	L	M	P	E	F	D	Weight Approx
	MM	Inch														
A4-HP3W-BV-15	15	1/2"	13	48.2	45.5	40.5	36.5	83	148	83.5	65	19	60	23	11.5	1.060
A4-HP3W-BV-20	20	3/4"	20	61	61.5	51	52.5	98	195	96	65	24.5	71	27	19.3	2.210
A4-HP3W-BV-25	25	1"	25	71.5	68.5	60	58	113	195	107.5	96	23.5	83	30	24.6	2.900
A4-HP3W-BV-32	32	1.1/4"	25	91.5	90	80	80	146	230	130.5	123	32.5	106	40	36	6.150
A4-HP3W-BV-40	40	1.1/2"	25	91.5	90	80	80	146	230	130.5	123	32.5	106	40	36	5.800