

Engineered For Critical Flow Application

Specification

- ▶ Size : 15MM To 200MM
- ▶ Body/Bonnet : CI / DI / C.S / A.S / S.S
- ▶ Pr. Rating : PN 16 / PN 25 / PN 40
- ▶ Bellow : S.S 316 / 321
- ▶ End : Flanged / Butt Weld



Introduction

Due to increased demand of products in the markets & also considering safety issues of the employees as well as plant and machinery plant managers are looking for components that should run in long period and there should not be any leakage in the components during performance.

Among these, valves play an important role in the fields of chemical, pharmaceuticals, oil & gas & in almost all processing industries.

If any leakages are found whole process has to be closed to sort out the problems which will incur heavy losses.

To overcome all these issues & considering the safety of the employees & productivity 4Matic Valves introduce bellow seal globe valves.

Advantages

- ▶ **Triple sealing design** primary seal bellow, secondary back seat & tertiary seal gland.
- ▶ Conically shaped plug with **hard-faced / stellite surface** & body seat hard faced / stellite.
 1. Conical shape reduces possibility of trapping sediments.
 2. Harder surfaces of plug & seat assure high performance without leakage over a product life.
- ▶ Ideally potential & safety for harmful liquids & gases.
- ▶ Prevent from **global emissions** & protect environment.
- ▶ Deliver results according to production targets.
- ▶ Structurally sound.
- ▶ Zero maintenance.
- ▶ Extra durability.
- ▶ Corrosion & friction resistance.
- ▶ Zero fluid loss.
- ▶ Leak free performance.



4Matic Bellow Seal Globe Valve

4Matic®

Body And Bonnet

The body and bonnet are cast with uniform section and generous radius fillets to prevent stress concentration. The castings are precision machined for high performance.



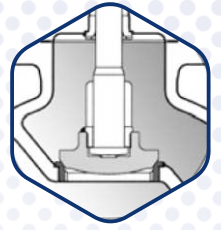
Bellow & Bellow Cup

Bellow Cup is welded to the top surface of bellow collar and prevents media to come in contact with the gland packing, hence provide corrosion and friction resistance & bottom bellow collars are welded to stem.



Conical Type Disc

4Matic Bellow Seal Globe valves feature a conical type disc provide a fine green surface on the taper seat with stellited seat face.

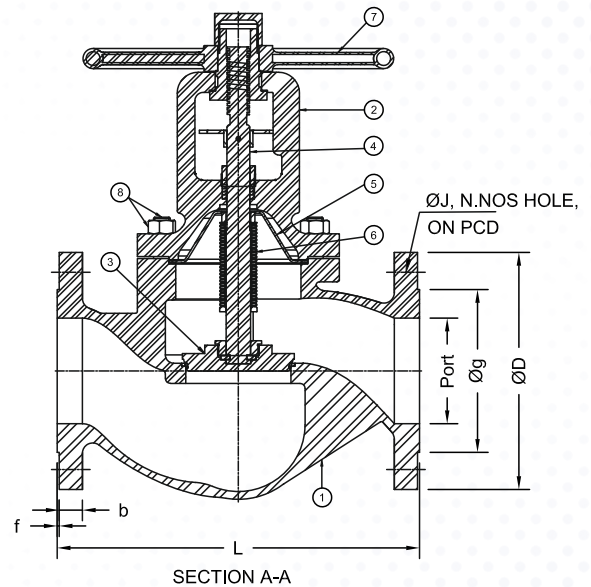


Stem

Bellow seal globe valve feature stem of one piece construction, ACME threaded and precision machined with polished surfaces to reduce friction, minimise leakage and extend stem life.



No.	Description	Material
1	Body	CI / DI / C.S / A.S / S.S
2	Bonnet	CI / DI / C.S / A.S / S.S
3	Plug	410 / 304 / 316
4	Stem	410 / 304 / 316
5	Bellow Cup	304 / 316
6	Bellow	S.S 316 / 321
7	Handwheel	WCB / S.G.I
8	Body bonnet fitting stud & bolt	CS / S.S



SECTION A-A

All Dimension are in mm

Size	PORT	L	ØD	B	F	ØG	ØJ	N	PCD
Tolerance	±1MM	±3MM	+2MM -1MM	+3MM	±5MM	±1MM	±8MM		±1.5MM
20MM	19	117	99	8.6	2	42.9	15.88	04	69.8
25MM	25	160	108	9.7	2	50.8	15.88	04	88.9
32MM	32	180	117	11.2	2	63.5	15.88	04	88.9
40MM	38	200	127	12.7	2	73	15.88	04	98.6
50MM	49	230	150	14.3	2	92.1	19.05	04	120.7
65MM	65	290	180	15.9	2	104.8	19.05	04	139.7
80MM	80	310	190	17.5	2	127	19.05	08	152.4
100MM	102	350	230	22.3	2	157.2	22.2	08	190.5
150MM	150	480	280	23.9	2	215.9	22.2	08	241.3
200MM	200	600	345	27.0	2	269.9	25.4	08	298.5

Higher Size On Request.

